

SUMMARY OF FINDINGS

Series updated since the November 1994 issue are: labour force, industrial disputes; housing finance, building approvals (including new trend data on the number of dwelling units for all States/Territories and Australia), price index of house building materials; average weekly earnings; retail prices (rebased according to the Australian and New Zealand Industrial Classification. As a result, data is now published for industry groups and not for individual retail industries); and new motor vehicle registrations.

Notable movements in this issue include:

- Trend employment increased for both the ACT and Australia by 0.2 per cent from October 1994. The number of unemployed fell for Australia by 0.6 per cent to 814,200, while for the ACT, it rose by 1.6 per cent to 12,600. In the same period the participation rate increased for the ACT by 0.1 percentage point, while no change occurred nationally.
- The ACT reported 79 working days lost per thousand employees due to industrial disputes in the year ending August 1994, which was below the national figure of 83.
- Original estimates for all categories of housing finance increased in September, with the exception of finance for purchase of established dwellings, which decreased by 4.1 per cent from August 1994. The finance for construction of dwellings and for purchase of new dwellings went up 48.8 per cent and 4.0 per cent, respectively, resulting in an overall increase in housing commitments by 3.7 per cent from the previous period. This is in contrast to the trend figure for the same period, which showed a fall of 3.2 per cent.
- The trend series for total dwellings approved for Australia levelled off in October 1994 at 16,844, while for the ACT it showed a strong growth at 10.5 per cent from the previous month. This represented the highest growth when compared across all States/Territory, with the Northern

Territory coming in second at 6.5 per cent. (Please note the original and trend estimates for the number of dwelling units approved includes dwelling units approved as part of alterations and additions to existing buildings (including conversions to dwelling units) and as part of the construction of non-residential building.)

- The ACT price index for established houses fell by 1.1 per cent in the September quarter 1994, with a lesser fall of 0.8 per cent from September 1993. Nationally, the index increased by 1.5 per cent in the quarter and 4.8 per cent over the year.
- The price index of house building materials for the ACT remains below that of the weighted average of the six capital cities, at the index point of 151.8 compared to 155.3. For the ACT this represented an increase of 0.3 per cent compared to the national increase of 0.2 per cent.
- Trend average weekly earnings for the August quarter 1994 increased by 0.8 per cent from the May quarter 1994 for the ACT, with the highest increase in total earnings attributed to female employees at 2.2 per cent. Trend total earnings for male employees in the ACT increased by 0.2 per cent. Similarly, the national estimates for female employees showed the most significant increase with 1.4 per cent compared to 1.0 per cent for males.
- Trend estimates of total retail turnover increased for the fourth consecutive month to \$176.3 million in October 1994. The main contributor to this increase was household goods retailing (not published in *Business Indicators*) with a 3.8 per cent growth from September 1994. Hospitality and services declined by 1.8 per cent in the same period.
- In trend terms the number of new motor vehicles registered for the ACT decreased by 0.3 per cent from the previous period, to 923 vehicles in October 1994. In the same period there was a

INQUIRIES

- for further information about statistics in this publication and the availability of related unpublished statistics contact Nives Marelic on Canberra (06) 207 0315 or any ABS State office.
- for information about other ABS statistics and services please contact Information Services on Canberra (06) 252 6627, 252 5402, 252 6007 or any ABS State office.

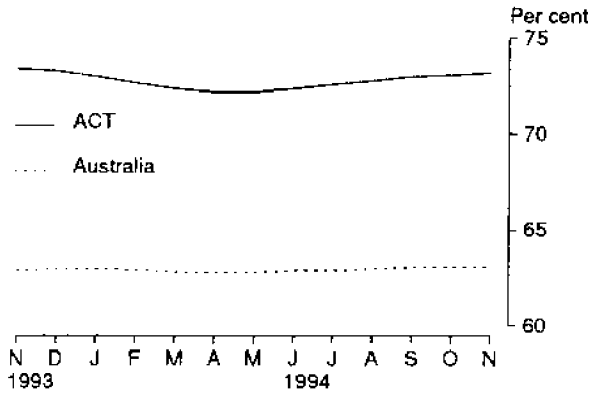
national increase of 0.4 per cent. However, the number of new motor vehicles registered nationally decreased by 12.8 per cent when compared to the

same period in the previous year; more so than for the ACT with an 8.1 per cent fall.

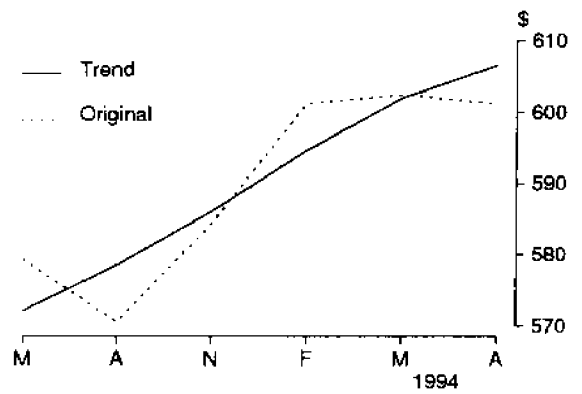
Dalma Jacobs
Statistician Australian Capital Territory

SELECTED BUSINESS INDICATORS

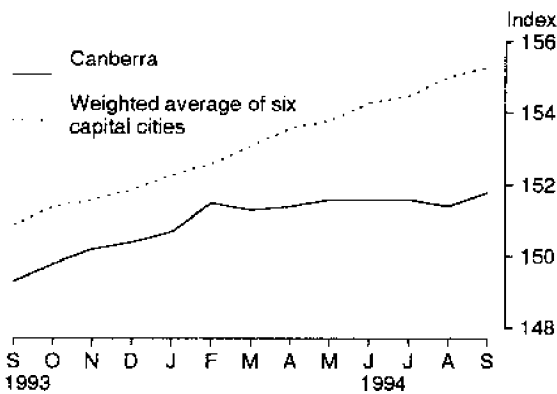
LABOUR FORCE
Participation rate



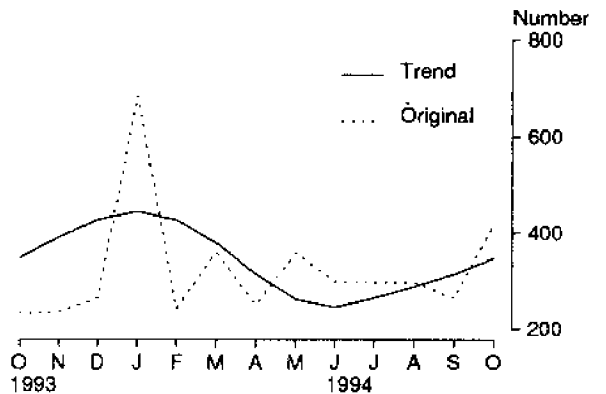
AVERAGE WEEKLY EARNINGS OF EMPLOYEES
Total earnings for all employees



PRICE INDEX
House building materials



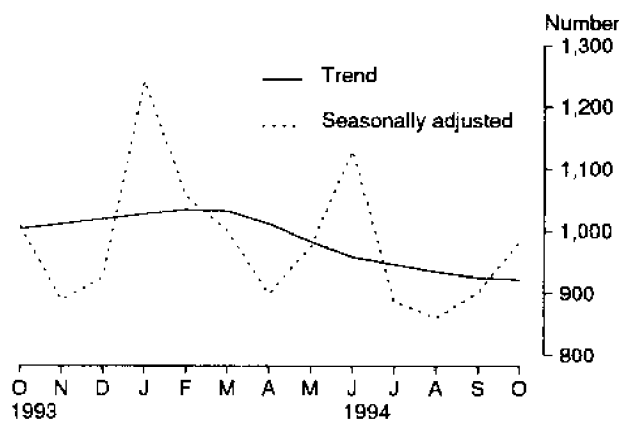
BUILDING APPROVALS
Dwelling units approved



HOUSING FINANCE



NEW MOTOR VEHICLE REGISTRATIONS



- Construction of dwellings
- Purchase of new dwellings
- - - Purchase of established dwellings

TABLE 1. AUSTRALIAN BUSINESS EXPECTATIONS: SALES,
DECEMBER QUARTER 1994/SEPTEMBER QUARTER 1995
EXPECTED AGGREGATE CHANGE
(per cent)

Period	Australian Capital Territory	Australia
Short-term		
Sept. 1993–Dec. 1993	1.1	3.6
Dec. 1993–Mar. 1994	0.1	-1.4
Mar. 1994–June 1994	1.6	1.9
June 1994–Sept. 1994	1.3	1.9
Sept. 1994–Dec. 1994	3.8	2.3
Medium-term		
Sept. 1993–Sept. 1994	1.5	2.9
Dec. 1993–Dec. 1994	2.7	3.1
Mar. 1994–Mar. 1995	3.8	3.9
June 1994–June 1995	6.2	3.3
Sept. 1994–Sept. 1995	2.3	4.1

TABLE 2. AUSTRALIAN CAPITAL TERRITORY BUSINESS INDICATORS, DECEMBER 1994

Indicator	Unit	Australian Capital Territory			Australia		
		Latest figure	Change from previous period (%)	Change from same period previous year (%)	Latest figure	Change from previous period (%)	Change from same period previous year (%)
POPULATION, VITAL AND LABOUR							
POPULATION, March qtr 94	'000	300.3	0.3	0.6	17 803.3	0.3	1.0
Natural increase	no.	820	5.8	-13.6	34 933	6.1	-8.4
Net migration	no.	54	-110.3	-96.9	22 528	446.4	22.8
Total increase	no.	874	246.8	-67.6	57 461	55.1	1.7
LABOUR FORCE, November 94p							
Original series							
Employed	'000	157.0	2.7	2.7	8 025.1	-0.1	3.3
Unemployed	'000	9.9	-21.4	-6.6	764.2	1.4	-14.5
Unemployment rate(a)	%	5.9	-1.7	-0.6	8.7	0.1	-1.6
Participation rate(a)	%	72.9	0.6	0.5	62.8	—	0.2
Long-term unemployed (Oct. 94)	no.	2 245	16.2	-3.7	278 968	-4.9	-15.5
Long-term unemployed as percentage total unemployed (Oct. 94)(a)	%	17.8	-4.9	-2.9	37.0	1.7	0.4
Trend series							
Employed	'000	155.2	0.2	1.4	8 025.6	0.2	3.4
Unemployed	'000	12.6	1.6	—	814.2	-0.6	-13.8
Unemployment rate(a)	%	7.5	0.1	-0.1	9.2	-0.1	-1.7
Participation rate(a)	%	73.2	0.1	-0.2	63.1	—	0.2
JOB VACANCIES, August qtr 94	'000	2.4	26.3	71.4	68.7	39.1	75.7
INDUSTRIAL DISPUTES IN PROGRESS, August 94							
Working days lost	'000	—	-100.0	—	37.2	3.9	-48.6
Days lost per '000 employees (year ended Aug. 94)	no.	79	1.3	887.5	83	-6.7	-55.9
BUILDING AND CONSTRUCTION							
HOUSING FINANCE, September 94							
Secured commitments to individuals for							
Original series							
Construction of dwellings	\$m	12.5	48.8	16.8	719.0	-6.6	5.0
Purchase of new dwellings	\$m	20.7	4.0	10.7	215.6	-6.0	17.9
Purchase of established dwellings	\$m	53.4	-4.1	-10.6	2 783.5	-7.4	-8.5
Total housing commitments	\$m	94.4	3.7	-7.4	3 718.2	-7.2	4.9
Seasonally adjusted series							
Total housing commitments	\$m	95.9	15.8	-1.1	3 853.0	8.8	6.4
Trend series							
Total housing commitments	\$m	93.0	-3.2	-2.9	3 780.5	-2.7	3.5
BUILDING APPROVALS, October 94							
Original series							
Dwelling units	no.	421	59.5	79.1	15 597	-14.6	4.3
Value of new residential	\$m	43.1	67.1	81.9	1 348.2	-15.3	11.4
Value of residential alterations and additions	\$m	7.0	-11.4	16.7	248.0	-3.8	27.2
Value of non-residential	\$m	11.5	-28.6	-2.5	885.8	57.2	38.3
Value of total building	\$m	61.6	23.9	48.4	2 482.0	2.9	21.4
Trend series							
Dwelling units	no.	348	10.5	—	16 844	—	9.3
BUILDING COMMENCEMENTS, June qtr 94							
New houses	no.	360	-3.0	-37.5	33 632	17.2	10.2
Value of houses commenced	\$m	42.4	4.7	-33.9	3 170.9	20.6	16.8
Value of non-residential building commenced	\$m	50.7	-68.3	-22.0	2 322.3	2.9	20.8
Value of total commencements	\$m	158.5	-42.7	-21.5	7 171.2	12.9	18.1
PRICE INDEXES							
Established house price index, 1990=100.0		132.3	-1.1	-0.8	112.6	1.5	4.8
Consumer price index, 1990=100.0		151.9	0.2	1.7	155.2	0.2	2.0

TABLE 2. AUSTRALIAN CAPITAL TERRITORY BUSINESS INDICATORS, DECEMBER 1994 — *continued*

Indicator	Unit	Australian Capital Territory			Australia		
		Latest figure	Change from previous period (%)	Change from same period previous year (%)	Latest figure	Change from previous period (%)	Change from same period previous year (%)
PRICES, WAGES AND CONSUMER SPENDING							
CONSUMER PRICE INDEX, Sept. qtr 94 (1989-90=100.0)							
Food		112.3	0.8	2.3	110.4	0.8	1.5
Housing		99.7	0.4	-0.6	94.9	0.5	—
Transportation		119.6	1.5	2.3	117.0	1.6	3.4
All groups		112.6	0.5	1.4	111.9	0.6	1.9
AVERAGE WEEKLY EARNINGS, August qtr 94							
Original series							
Males	\$	706.80	-1.0	5.5	631.80	1.1	2.2
Females	\$	500.70	0.9	6.0	421.40	-0.3	2.9
Total persons	\$	601.20	-0.2	5.4	536.20	0.8	3.0
Trend series							
Males	\$	713.60	0.2	5.3	633.80	1.0	2.5
Females	\$	506.00	2.2	5.5	426.30	1.4	4.0
Total persons	\$	606.60	0.8	4.8	539.90	1.4	3.4
RETAIL TURNOVER, October 94							
Original series							
Food retailing	\$m	70.2	5.6	5.2	3 628.1	3.2	7.4
Department stores	\$m	23.2	6.4	2.7	934.7	5.4	5.4
Hospitality and services	\$m	28.1	-1.1	-5.7	1 669.7	5.4	12.1
All other retailing	\$m	59.4	9.0	10.4	3 091.4	3.2	6.3
Total	\$m	180.9	5.7	4.6	9 323.9	3.8	7.7
Trend series							
Food retailing	\$m	67.6	1.5	4.8	3 605.0	1.1	8.0
Department stores	\$m	23.7	0.4	4.4	950.0	1.2	7.2
Hospitality and services	\$m	27.4	-1.8	2.6	1 625.5	1.0	12.3
All other retailing	\$m	57.6	1.9	2.9	3 102.4	0.6	7.2
Total	\$m	176.3	1.0	3.8	9 282.9	0.9	8.4
TOURISM AND TRANSPORT							
HOTELS, MOTELS AND GUEST HOUSE ACCOMMODATION, June qtr 94							
Original series							
Room nights	'000	199.2	-2.6	6.5	8 196.9	-1.9	6.4
Takings at current prices	\$m	17.2	-1.7	8.2	674.5	-4.2	10.2
Takings at 1989-90 prices	\$m	15.7	—	9.0	580.7	-0.6	8.5
Seasonally adjusted series							
Room nights	'000	207.0	-2.8	14.7	8 558.5	0.5	6.5
Takings at current prices	\$m	17.3	-5.5	8.8	714.2	0.1	10.3
Takings at 1989-90 prices	\$m	15.8	-3.7	9.7	611.9	2.9	8.5
Trend series							
Room nights	'000	209.5	-0.1	12.6	8 597.3	1.0	7.2
Takings at current prices	\$m	17.7	-1.1	9.3	720.1	1.2	11.5
Takings at 1989-90 prices	\$m	16.1	—	5.9	609.3	2.6	8.3
NEW MOTOR VEHICLE REGISTRATIONS, October 94							
Motor vehicles	no.	900	-3.6	-7.5	54 355	7.8	21.6
Seasonally adjusted motor vehicles	no.	984	9.1	-2.4	55 799	13.7	22.8
Trend motor vehicles	no.	923	-0.3	-8.1	51 927	0.4	12.8
INTERSTATE ROAD FREIGHT MOVEMENT, June qtr 94							
Originating	'000 tonnes	102.9	124.7	133.9	4 663.2	3.3	6.1
Receiving	'000 tonnes	122.4	-3.4	-7.6	4 663.2	3.3	6.1
AGGREGATE INDICATORS							
STATE ACCOUNTS, June qtr 94							
Original series							
Gross State product at current prices	\$m	2 289	4.5	5.4	107 566	4.7	6.0
State final demand at average 1989-90 prices	\$m	3 041	9.4	-2.7	99 234	8.0	4.0
Private final consumption expenditure	\$m	1 299	2.9	3.1	66 237	3.6	4.8
Private gross fixed capital expenditure	\$m	265	22.7	-26.0	17 102	12.0	8.9
Trend series							
Gross State product at current prices	\$m	2 295	0.6	3.0	108 656	1.5	5.5
State final demand at average 1989-90 prices	\$m	2 961	0.4	1.0	98 137	1.4	4.3
Private final consumption expenditure	\$m	1 318	-0.4	3.0	67 518	1.3	5.5
Private gross fixed capital expenditure	\$m	254	-1.2	-14.5	16 895	2.6	9.5

(a) Change shown in terms of percentage points. (b) ACT data 1986-87 = 100.00, Australia 1985-86 = 100.0.

Source: ABS Catalogue Nos: 3101.0, 5242.0, 5609.0, 6202.0, 6203.0, 6302.0, 6321.0, 6354.0, 6401.0, 6408.0, 6416.0, 8501.0, 8634.0, 8635.8, 8731.0, 8752.0, 9214.0, 9301.0.

TABLE 3. ACT IN RELATION TO THE REST OF AUSTRALIA

Indicator	Unit	Latest period	NSW	Vic.	Qld	SA	WA	Tas.	NT	ACT	Aust.
LABOUR FORCE											
Employed persons (trend)	'000	Nov. 94p	2 686.5	1 990.8	1 461.0	648.7	806.5	194.3	82.2	155.2	8 025.6
Unemployment rate (trend)	%	Nov. 94p	8.8	10.1	9.1	10.4	7.8	11.0	7.7	7.5	9.2
BUILDING APPROVALS											
Dwelling units approved	no.	Oct. 94	4 609	3 189	4 192	804	1 878	330	174	421	15 597
Dwelling units approved (trend)	no.	Oct. 94	5 399	2 937	4 442	971	2 133	310	181	348	16 844
Value of non-residential building approved	\$m	Oct. 94	209.3	347.3	213.8	26.7	60.2	9.3	7.6	11.5	885.8
Value of all buildings approved	\$m	Oct. 94	740.8	702.8	593.2	94.9	220.1	39.0	29.0	61.6	2 482.0
ENGINEERING CONSTRUCTION											
Value of engineering construction work done	\$m	June qtr 94	1 264.5	703.0	748.3	197.3	469.2	70.1	53.5	42.1	3 547.9
AVERAGE WEEKLY EARNINGS											
Full-time adult ordinary time (trend)	\$	Aug. qtr 94	644.20	619.90	585.60	603.60	619.90	591.80	637.00	720.20	623.20
RETAIL TRADE											
Retail turnover (trend)	\$m	Oct. 94	3267.1	2 143.8	1 718.0	695.7	947.6	231.5	103.0	176.3	9 282.9
HOTELS, MOTELS & GUEST HOUSE ACCOMMODATION											
Room nights occupied (trend)	'000	June qtr 94	2 891.8	1 356.3	2 342.9	472.0	791.0	267.9	266.0	209.5	8 597.3
NEW MOTOR VEHICLE REGISTRATIONS											
Trend	no.	Oct. 94	19 100	11 991	9 475	3 334	5 277	1 278	549	923	51 927
CONSUMER PRICE INDEX (1989-90=100.0)											
Food		Sept. qtr 94	110.2	108.6	110.7	114.5	111.6	113.9	112.8	112.3	110.4
Housing		Sept. qtr 94	96.8	92.7	101.1	92.4	88.5	94.8	105.3	99.7	94.9
Transportation		Sept. qtr 94	115.3	118.4	115.8	119.6	117.9	113.9	114.9	119.6	117.0
All Groups		Sept. qtr 94	111.0	112.2	112.5	114.9	110.1	113.3	113.0	112.6	111.9
Average retail prices (cents)											
Milk, carton, supermarket sales	1 litre	Sept. qtr 94	104.0	106.0	107.0	101.0	105.0	115.0	94.0	109.0	n.a.
Bread, white loaf, sliced, supermarket sales	680 g	Sept. qtr 94	163.0	154.0	145.0	125.0	139.0	160.0	170.0	165.0	n.a.
Beef, rump steak	1 kg	Sept. qtr 94	1 257.0	1 111.0	1 147.0	1 180.0	1 057.0	1 075.0	1 287.0	1 105.0	n.a.
Chicken, frozen	1 kg	Sept. qtr 94	275.0	335.0	271.0	325.0	316.0	339.0	358.0	253.0	n.a.
Potatoes	1 kg	Sept. qtr 94	68.0	70.0	76.0	60.0	115.0	70.0	85.0	73.0	n.a.
Coffee, instant	150 g jar	Sept. qtr 94	374.0	503.0	407.0	512.0	469.0	499.0	556.0	439.0	n.a.
Scotch nip, public bar	30 ml	Sept. qtr 94	297.0	254.0	237.0	311.0	356.0	209.0	285.0	268.0	n.a.
Private motoring -- petrol, leaded	1 litre	Sept. qtr 94	70.1	70.0	62.2	71.5	71.3	76.3	74.8	73.5	n.a.
Private motoring -- petrol, unleaded	1 litre	Sept. qtr 94	68.4	68.3	60.5	69.7	69.8	74.7	73.3	71.9	n.a.

TABLE 4. ACT IN RELATION TO THE REST OF AUSTRALIA — PERCENTAGE CHANGES

Indicator	Latest period	NSW	Vic.	Qld	SA	WA	Tas.	NT	ACT	Aust.
LABOUR FORCE										
Employed persons (trend)	Nov. 94p	0.2	—	0.3	—	0.3	-0.1	1.6	0.2	0.2
Unemployment rate (trend)(a)	Nov. 94p	-0.1	-0.1	..	—	-0.1	0.1	0.1	0.1	-0.1
BUILDING APPROVALS										
Dwelling units approved	Oct. 94	-25.8	16.7	-16.3	-25.1	-23.2	4.8	-16.7	59.5	-14.6
Dwelling units approved (trend)	Oct. 94	0.2	0.9	-2.4	-1.3	-1.0	-0.3	6.5	10.5	—
Value of non-residential building approved	Oct. 94	1.0	190.6	87.4	-19.3	-2.7	19.2	94.9	-28.6	57.2
Value of all buildings approved	Oct. 94	-19.5	65.6	4.7	-24.1	-14.9	6.3	-6.5	23.9	2.9
ENGINEERING CONSTRUCTION										
Value of engineering construction work done	June qtr 94	16.2	14.5	24.8	8.4	6.3	26.3	25.6	6.0	15.8
AVERAGE WEEKLY EARNINGS										
Full-time adult ordinary time (trend)	Aug. qtr 94	1.5	1.1	0.5	0.6	1.0	0.1	0.4	0.9	1.1
RETAIL TRADE										
Retail turnover (trend)	Oct. 94	0.7	1.2	1.0	1.2	0.8	0.1	2.1	1.0	0.9
HOTELS, MOTELS & GUEST HOUSE ACCOMMODATION										
Room nights occupied (trend)	June qtr 94	0.4	1.8	0.8	-0.1	3.6	3.0	-2.9	-0.1	1.0
NEW MOTOR VEHICLE REGISTRATIONS										
Trend	Oct. 94	1.3	1.6	-2.2	-0.6	0.2	1.1	-0.2	-0.3	0.4
CONSUMER PRICE INDEX (1989-90=100.0)										
Food	Sept. qtr 94	0.7	0.6	0.5	1.3	1.5	1.5	-0.3	0.8	0.8
Housing	Sept. qtr 94	0.9	0.3	0.4	0.5	0.8	0.6	0.8	0.4	0.5
Transportation	Sept. qtr 94	2.3	0.8	1.8	0.9	1.6	1.0	0.9	1.5	1.6
All Groups	Sept. qtr 94	0.9	0.2	0.9	0.4	0.9	0.8	0.5	0.5	0.6
Average retail prices (cents)										
Milk, carton, supermarket sales	Sept. qtr 94	2.0	1.9	1.9	4.1	1.0	4.5	—	3.8	n.a.
Bread, white loaf, sliced, supermarket sales	Sept. qtr 94	-1.8	0.7	-0.7	-0.8	12.1	3.9	1.2	-1.2	n.a.
Beef, rump steak	Sept. qtr 94	-2.0	0.8	-0.1	1.4	0.8	-2.0	3.3	3.1	n.a.
Chicken, frozen	Sept. qtr 94	-6.8	3.7	-11.1	-1.2	-1.6	-1.5	—	-9.3	n.a.
Potatoes	Sept. qtr 94	-8.1	..	4.1	-4.8	16.2	-9.1	4.9	15.9	n.a.
Coffee, instant	Sept. qtr 94	-16.7	17.5	4.1	33.3	16.7	2.5	18.6	1.6	n.a.
Scotch nip, public bar	Sept. qtr 94	1.7	—	—	-0.6	-2.5	—	1.8	0.8	n.a.
Private motoring — petrol, leaded	Sept. qtr 94	2.0	-0.3	0.6	1.1	2.9	1.5	1.5	2.2	n.a.
Private motoring — petrol, unleaded	Sept. qtr 94	1.0	-1.3	-0.5	0.1	2.2	0.4	0.7	1.4	n.a.

(a) Change shown in terms of percentage points.

Note: Figures in the above tables are either preliminary, final or revised to previously published figures. Users should check the latest relevant publication or with ABS Information Services if the status of the statistic is important. Symbols used in this publication: — nil or rounded to zero; n.a. - not available; p - preliminary data; n.p. - not available for publication.

